

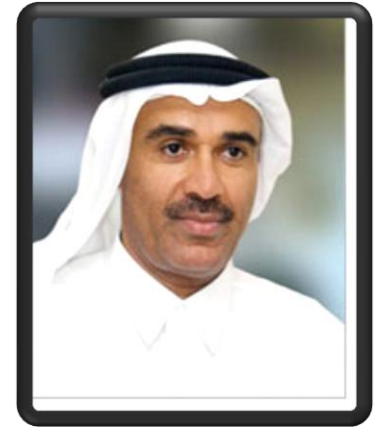
Dubai Municipality Corporate Emergency Management System

Eng. Redha Salman, Director
Public Health & Safety Department
Dubai Municipality

Overview

- Dubai Municipality
 - Organization
 - Core Services
- Corporate Emergency Management System
- Resilient Cities Campaign
 - Accomplishments
 - Future Plans

Dubai Municipality

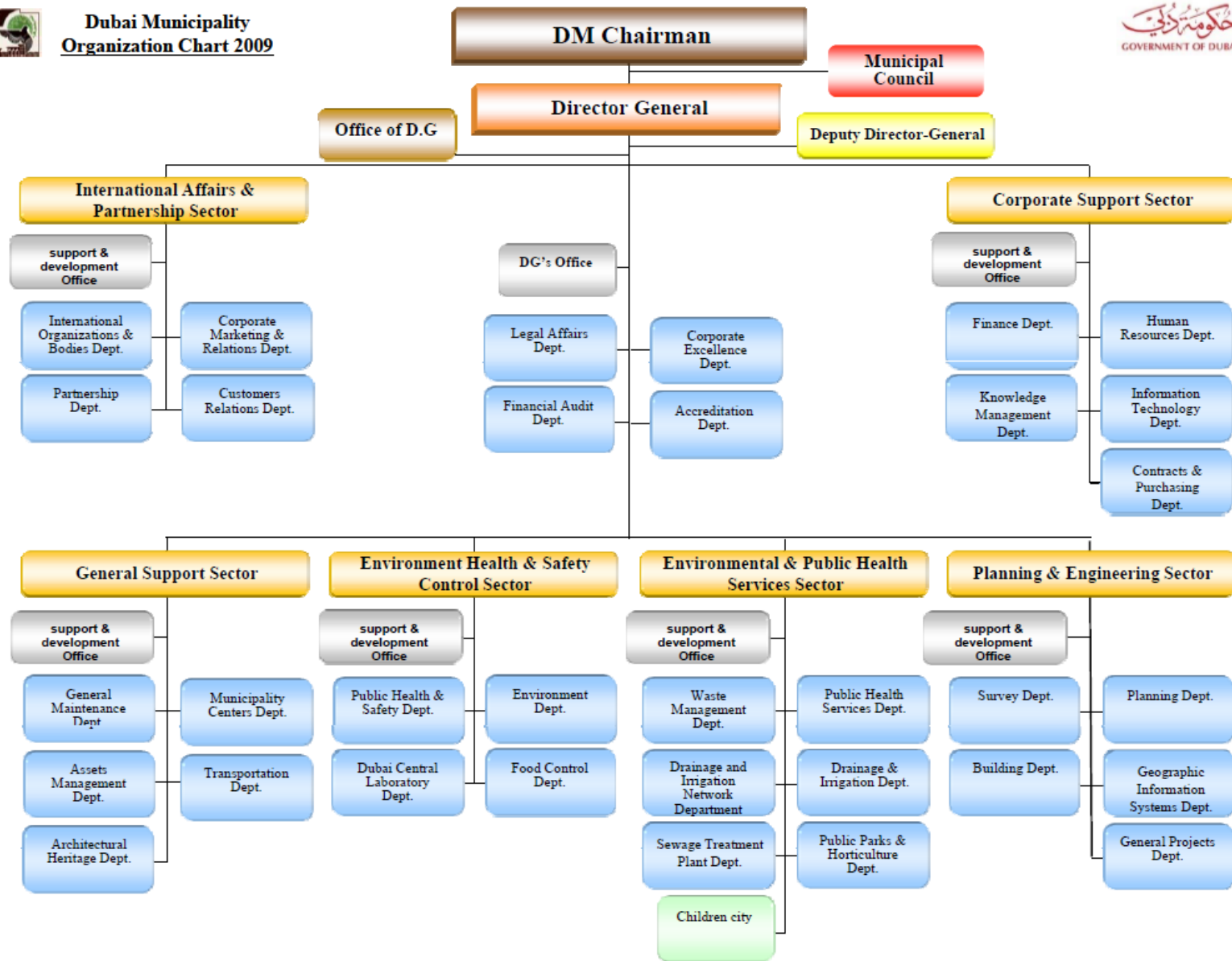


*H.E. Hussain Nasser Lootah
Director General*



Fast Facts:

- Established in 1954
- Number of Buildings: 28
- Number of staff: 11,000+
- Departments: 35



Core Sectors



Environment & Public Health

- Health Services
- Drainage & Irrigation
- Parks & Horticulture
- Waste Mgmt
- Sewerage



General Support

- Heritage sites
- DM Centers
- Transport
- Maintenance
- Assets Mgmt



Health, Safety and Env. Control

- Food Control
- Health and Public Safety
- Central Labs



International Affairs and Partnership

- Customer Relations
- Corporate Marketing
- International Organizations
- Partnership

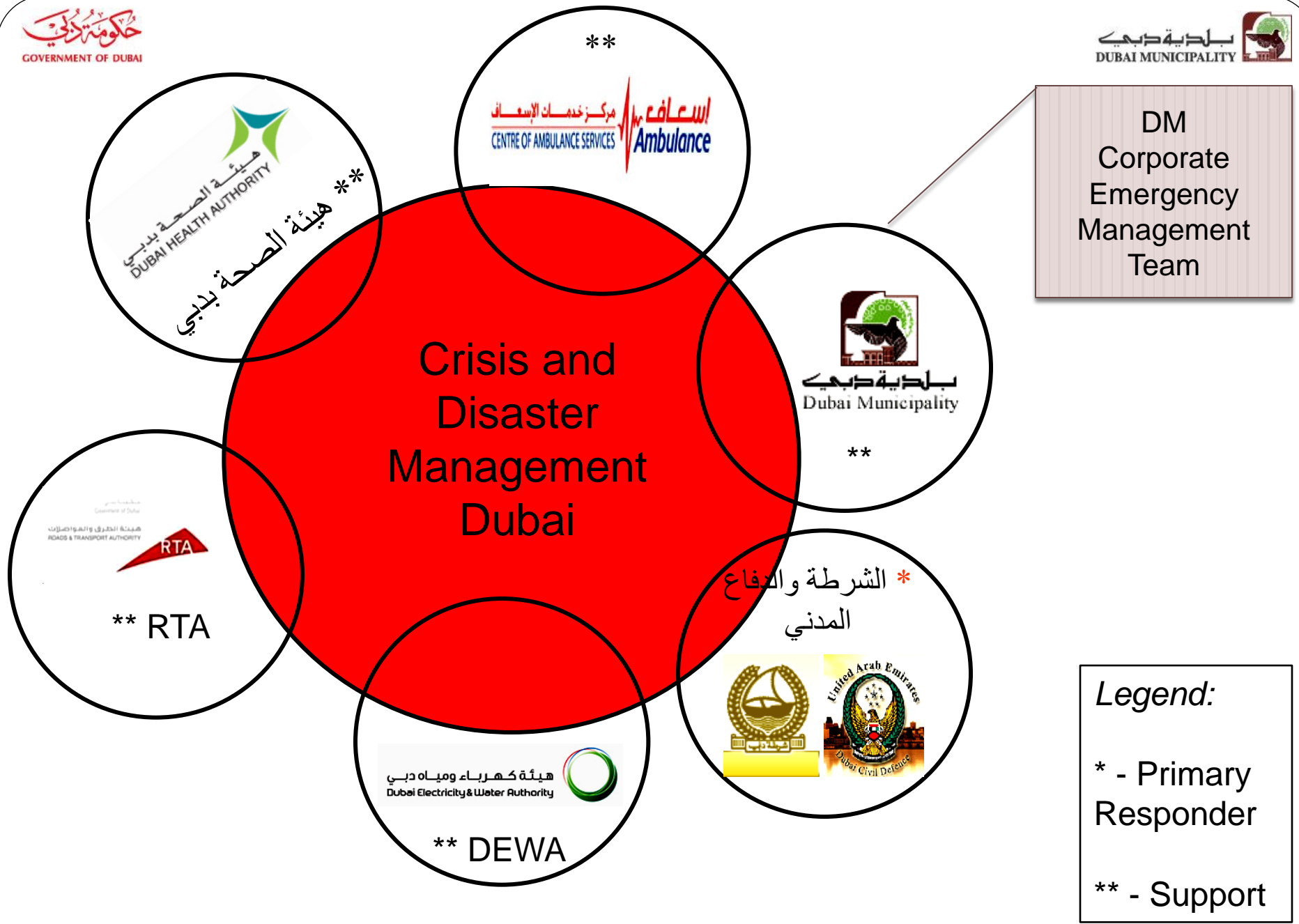


Planning & Engineering

- Planning
- GIS
- General Projects
- Survey
- Building

Corporate Emergency Management System

- Organization of Team
- Development of Plans
- Establishment of Performance Indicators
 - Role of Higher Management
- Linkages with Corporate Emergency Management Team



سجل دبي
Government of Dubai
هيئة الطرق والمواصلات
ROADS & TRANSPORT AUTHORITY
RTA
**** RTA**

مركز خدمات الإسعاف
CENTRE OF AMBULANCE SERVICES
الإسعاف
Ambulance

بلدية دبي
Dubai Municipality

هيئة كهرباء ومياه دبي
Dubai Electricity & Water Authority
**** DEWA**

***** الشرطة والتفاح المدني
Dubai Civil Defence
United Arab Emirates

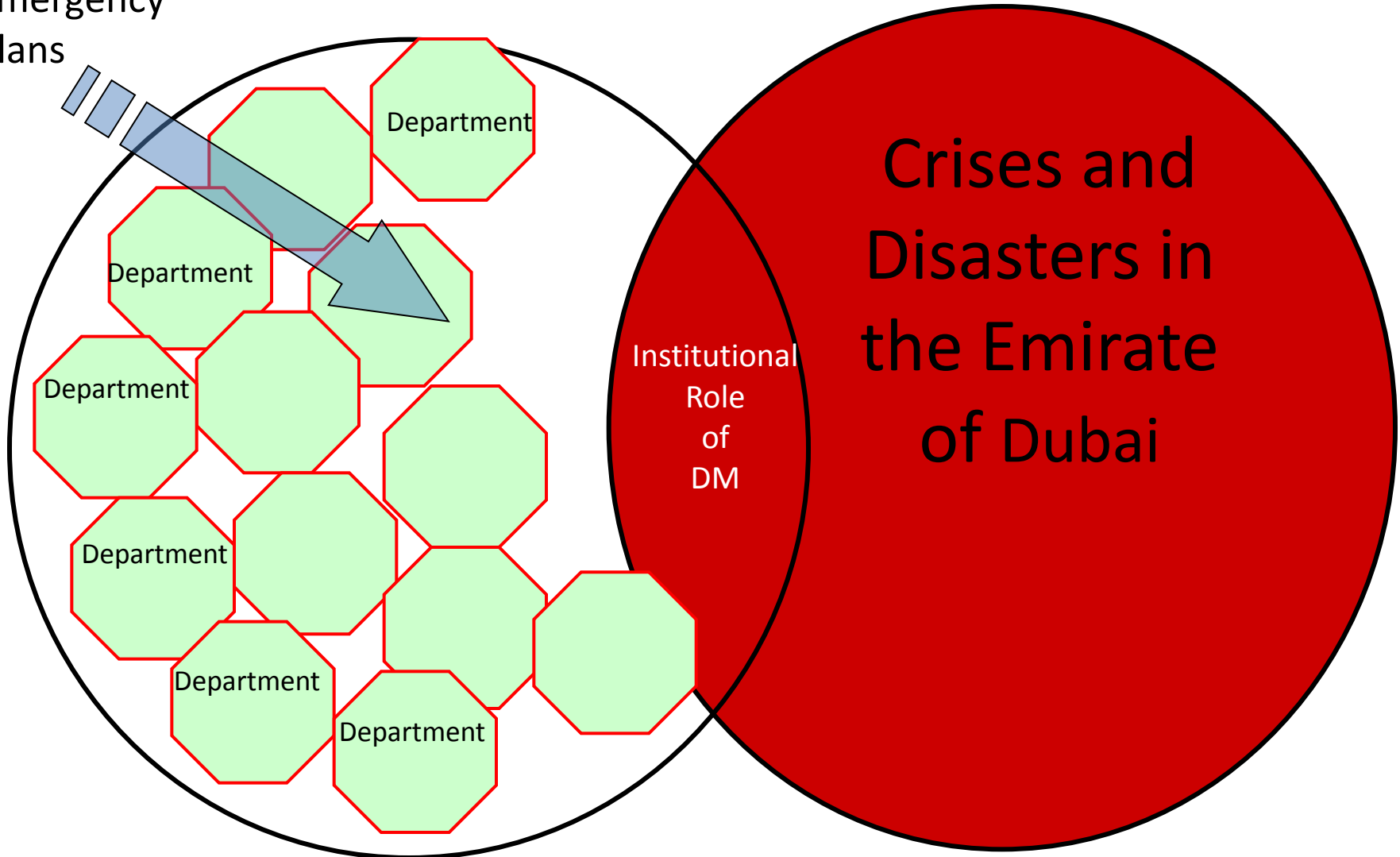
DM
Corporate
Emergency
Management
Team

Legend:
* - Primary
Responder

** - Support

Risk Management and Emergency

Emergency
Plans





Risk and Emergency Management Policy



Risk and Emergency Management Policy at Dubai Municipality

Dubai Municipality is committed towards preparing and implementing an effective customized system of risk and emergency management in accordance with global best practices to manage and control the risks and cope with emergency situations occurring within its facilities or all over the emirate through the establishment of the following by the Municipality's Departments:

- Compiling the list of the available resources, competencies and existing working teams and updating this annually.
- Preparing emergency plans at the departments level as per the scenarios relevant to the concerned Department.
- Responding to emergency situations occurring at DM work sites.
- Responding to any disaster & crisis situation which may occur in the Emirate in accordance to the nature of operations of the concerned department.
- Preparing annual reports and alerting Public Health & Safety Department regarding the emergency cases participated in or responded to.

Protecting employees & public lives against any dangers causing injuries/ death at DM sites or its surrounding areas and making effort to protect the private and public properties from loss and damage.

Commitment towards raising awareness regarding risk and emergency management discipline and its applied mechanisms among all Dubai Municipality employees through conducting training workshops & awareness publications.

Taking the necessary measures to ensure the effective implementation of the emergency plans, evaluating them and updating it based on internal and external data analysis.

Reviewing and improving our policy on a regular basis and ensure that it is documented and announced to all employees and customers of Dubai Municipality as well as ensuring its effectiveness and continuous improvement.

**Public Health & Safety Department
Dubai Municipality**



Classification of Departments

Category "C"	Category "B"	Category "A"
<ul style="list-style-type: none">Depending on level of contribution in responding to emergencies & crises	<ul style="list-style-type: none">According to the level of the impact of its operations and activities	<ul style="list-style-type: none">According to the level of the impact of its operations & activities; and level of contribution in responding to emergencies and crises
Responders	Potential Source	Both a Responder and a Source (C+B)



Organization Unit	Determination & Evaluation of Hazards	تحديد وتقييم المخاطر المحتملة	الوحدة التنظيمية
Form Title			اسم النموذج
Doc. Ref.	DM-ECM-02		رقم النموذج

Emergency Assessment Form

disasters & emergencies mentioned below are approved by the Local committee for Emergency & Disasters -Dubai

Emergency Assessment & Response

خطة المعالجة/ الاستجابة

Responsibilities			Contingency Plan "plan code"	Responsibilities			preventive actions	need to prepare emergency plan?	priority	frequency	severity	Role of the Dept.		Code	Emergencies & Disasters cases
outsources	within DM	within Dept.		outsources	within DM	within dept.						support	Main		
												on Dubai level	on DM level		
Structural Disasters (S)															
														SUCC	Under Construction Bldg.Collapse
														SBRC	Bridge Collapse
														SDDD	Dry dock Water Flood
														STC	Tunnel Collapse
														SBLC	Building Collapse
Health Disasters (H)															
														HTB	Tuberculosis
														HPLAG	PLAG
														H5N1	H5N1
														HSARS	SARS
														HLEGN	Leginella
														HMCD	Mad Cow Disease
														HFDP	Food Poising
Natural Disasters (N)															
														NEQ	Earthquake
														NSS	Sand Storm
														NRS	Rain Storm
														NHRW	Heavy Rain
														NFOG	HeavyFog
														NSFLD	Sea Flood
Tecnology Disasters (p)															
														PFIRE	Fire
														PEXP	Explosion
														PSPILL	Chemical Spill
														PGAS	Gas Polution
														PRAD	Radioactive Polution
														PBIO	Biological Polution
														PPWR	Electrical Cut

	Approved by	Reviewed by	Prepared by
--	-------------	-------------	-------------

Evaluation of Risks

		Severity			
			High A	Med B	Low C
Frequency	High A		High Priority	High Priority	Med Priority
	Med B		High Priority	Med Priority	Low Priority
	Low C		Med Priority	Low Priority	Low Priority
		Priority			

Resilient Cities Campaign

Accomplishments and Future Plans



Accomplishment

Checklist 1. Organization

Coordination:

- Drafted Corporate Emergency Management System;
- Engaged experts and various stakeholders to develop DRR platform;



Accomplishment

Checklist 3: Prepare Risk Assessments:

- Conducted hazard and vulnerability risk assessments;
- Identified responsibilities and tasks of departmental emergency teams;
- Developed measurements to assess each department's readiness to respond;



Accomplishment

Checklist 7: Education Programs and Training:

- Developed Emergency Preparedness Brochure for Establishments
- Technological hazard seminar involving 'Elevator and Escalator in Residential and Public Buildings' was held for malls, shopping centers, hotels, property developers, etc.



Accomplishment

Checklist 9: Early Warning and Emergency Management Capacities:

- Conducted first ever full simulation exercise for the main building of Dubai Municipality.



Future Plans

The screenshot shows a web browser window displaying the Dubai Municipality Portal. The page is titled "Public Health & Safety Department" and features a navigation menu with categories like Sectors, Coasts and The Green Area, Public Health and Safety, Planning and Building, Projects and Infrastructure, Recreation and Heritage, Environment, and Certification. The main content area includes a "Login" section, a "Filter Your Services" section, and a "Services" section with a "Directors Word" section. The "Directors Word" section contains a message from the director, Assalamu Alaikkum, welcoming visitors to the website. The page also includes a "complain" section and a "Technical Guidelines List" section.

Enhanced Website

Public Health & Safety Department's website will have dedicated page for DRR

Future Plans

Mandatory Emergency Plans for All Establishments

Technical Guideline to be issued to ensure that all establishments develop their own emergency preparedness and response plans



Thank You!