

“Just give more money to the poor and they’ll be OK”

*Tearing down the myth through risk analysis
applied to social policy formulation*

Unsafe Conditions Index in the Dominican Republic



Alonso Brenes



UNDP-UNEP Poverty-Environment Initiative



What does the index do?

Analyzes risk of families helped for the Dominican Unified Beneficiaries System

Money transfers to poor families

UCI has been designed in order to:

- *Calibrate poverty index using local risk analysis.*
- *Improve impact assessments of the social programs.*
- *Incorporate risk and territorial dimension in the public policies formulation processes.*



Empirical evidence have shown...

- More money into the household is not enough.
- Territorial blockades limits social policies and must be addressed.
- Without a territorial approach the impact of the public policies won't be accurate.



Conceptual background

- Three of the four risk drives presented on the United Nations GAR 2009.

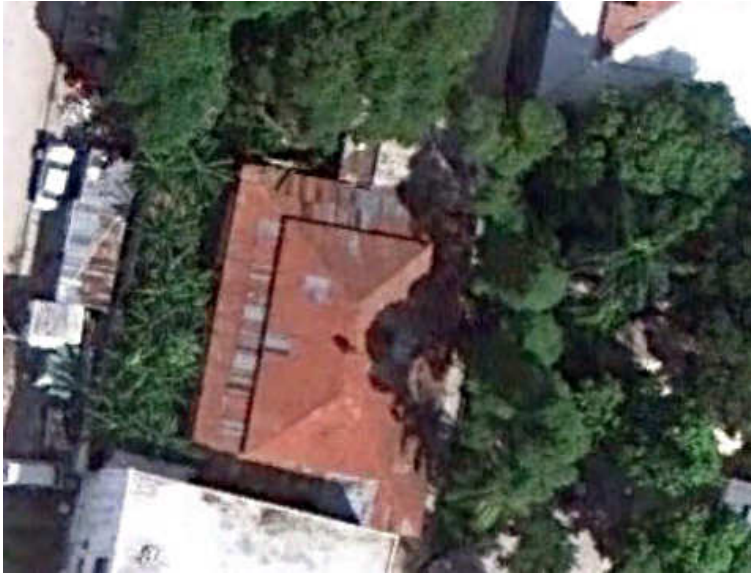
Vulnerable livelihoods
Poor governance
Ecosystem decline

- Unsafe conditions approach of the Pressure and Release Model (PAR).

Physical environment
Local economy
Social relations
Public actions and institutions

Matrix of indicators





Calculated for household...



Unsafe Conditions Index for the Dominican Republic

Calculated for household...



... and for the immediate environment

