

REPUBLIC OF TURKEY
MINISTRY OF INTERIOR

DISASTER AND EMERGENCY
MANAGEMENT PRESIDENCY
(AFAD)



Davut ŞAHİN
28.01.2019
Kobe/JAPAN

Disaster and Emergency Management Presidency

**POST-DISASTER
INFRASTRUCTURE RECOVERY
WORKS
BY AFAD**



CONTEXT

01

AFAD
ORGANIZATION

02

RECOVERY
PHASE

03

WORKFLOW of
NATIONAL AID

04

EXAMPLES FROM
RECENT DISASTERS

05

LESSONS LEARNED AND
STRATEGIES FOR INFRASTRUCTURE RECOVERY IN DUZCE

[DEPARTMENTS of AFAD]

01

EARTHQUAKE

05

INFORMATION
SYSTEM AND
COMMUNICATION

09

CIVIL DEFENSE

02

VOLUNTEER AND
DONOR

06

STRATEGY
DEVELOPMENT

10

PLANNING AND
RISK REDUCTION

03

FOREIGN RELATIONS
AND HUMANITARIAN
AID

07

EDUCATION

11

RESPONSE

04

PERSONNEL AND
SUPPORT SERVICE

08

INSPECTION
SERVICES

12

RECOVERY

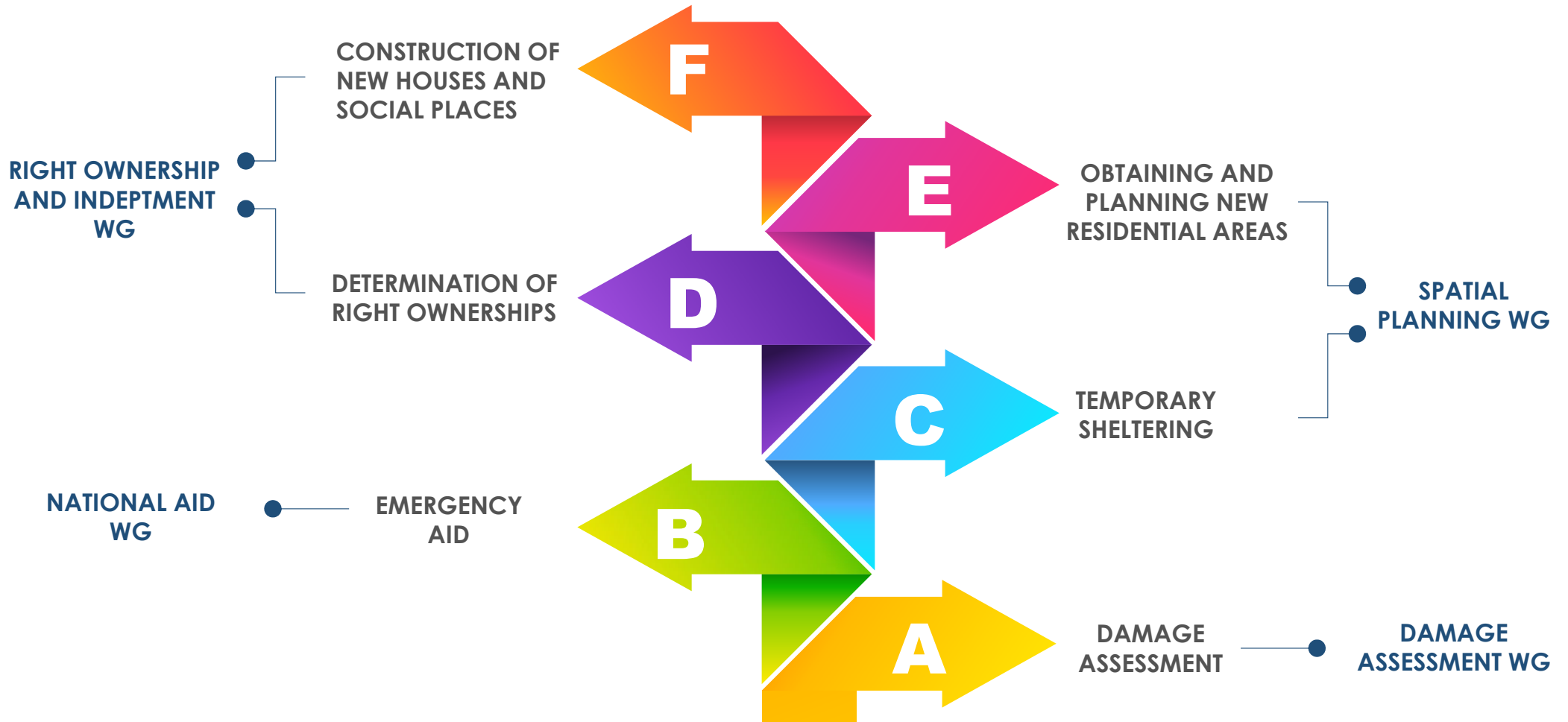
RECOVERY DEPARTMENT

AFAD 

6 WORKING GROUPS



[RELATION OF WORKING GROUPS WITH WORKFLOW OF RECOVERY PHASE]



NATIONAL AID WORKING GROUP

AFAD^{TR}

RECOVERY DEPARTMENT

[ASSIGNED POSITION]

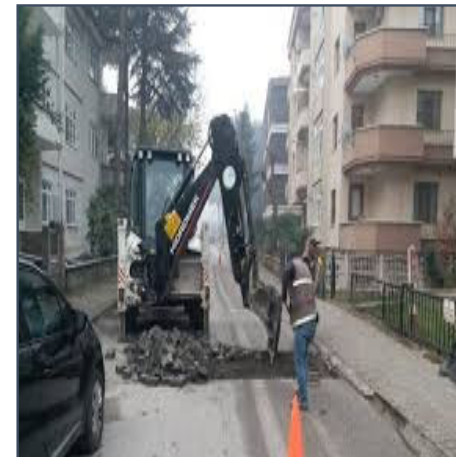


FINANCIAL AID FOR BASIC NEEDS

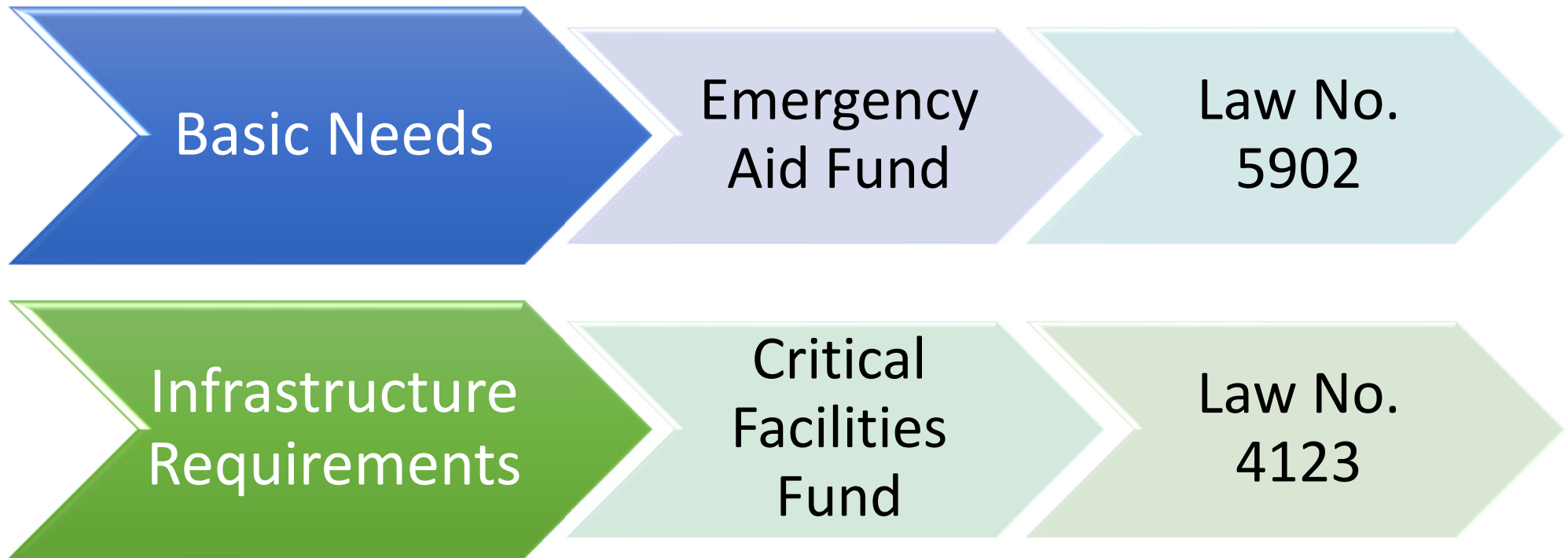
- Food
- Medical Treatments
- Temporary Sheltering
- Etc.

FINANCIAL AID FOR INFRASTRUCTURAL REQUIREMENTS

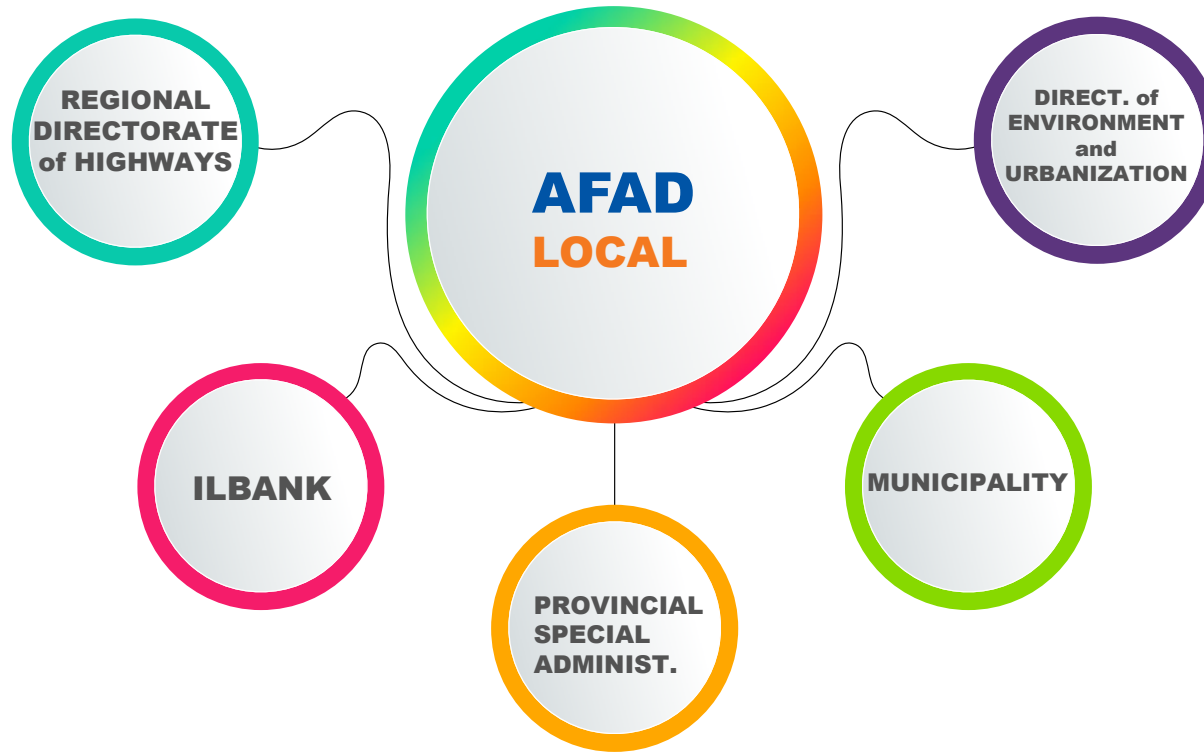
- Road
- Drinking Water
- Sewage System
- Bridge
- Sustaining Wall
- Purification Facility



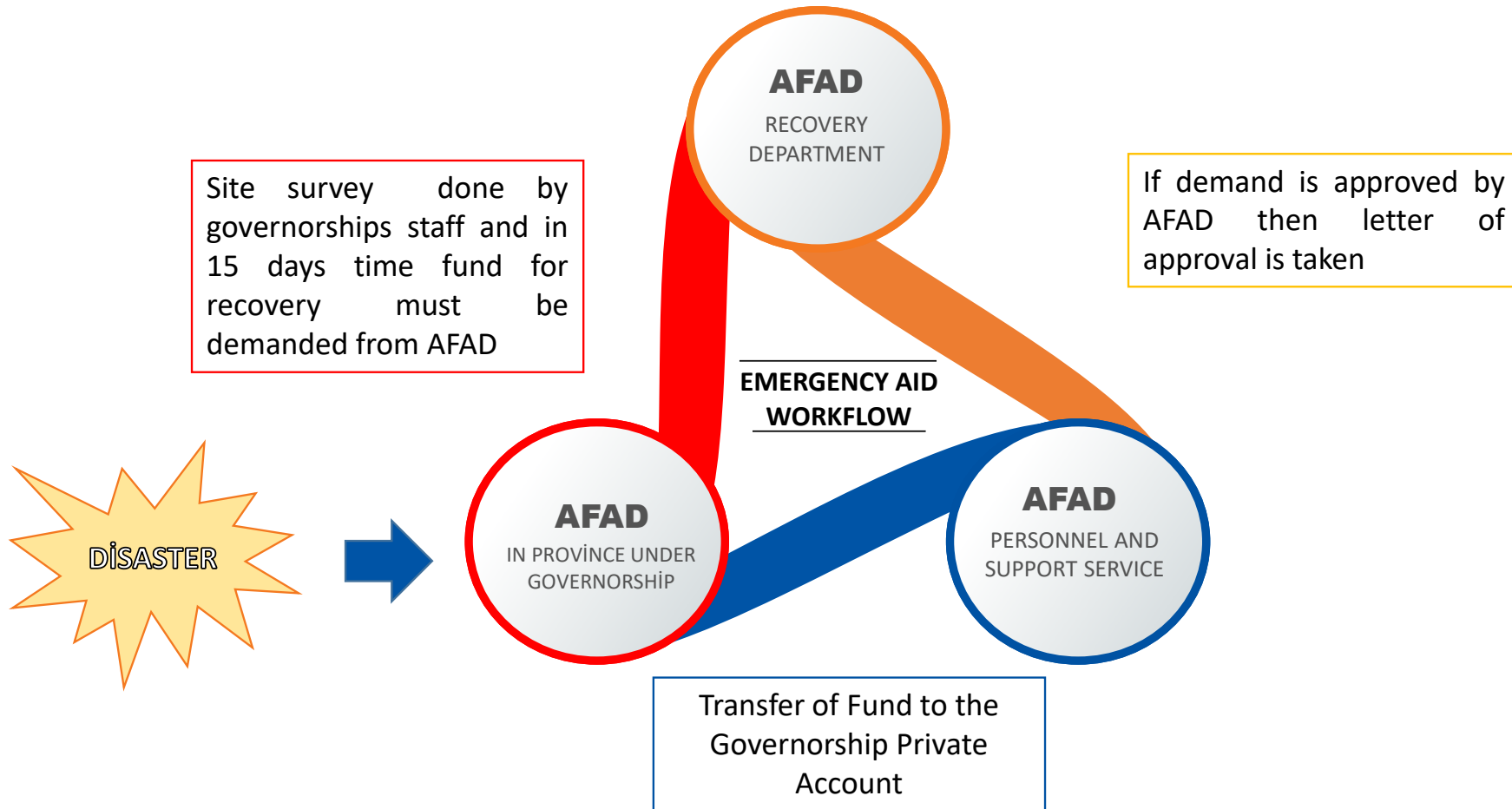
[FINANCING]



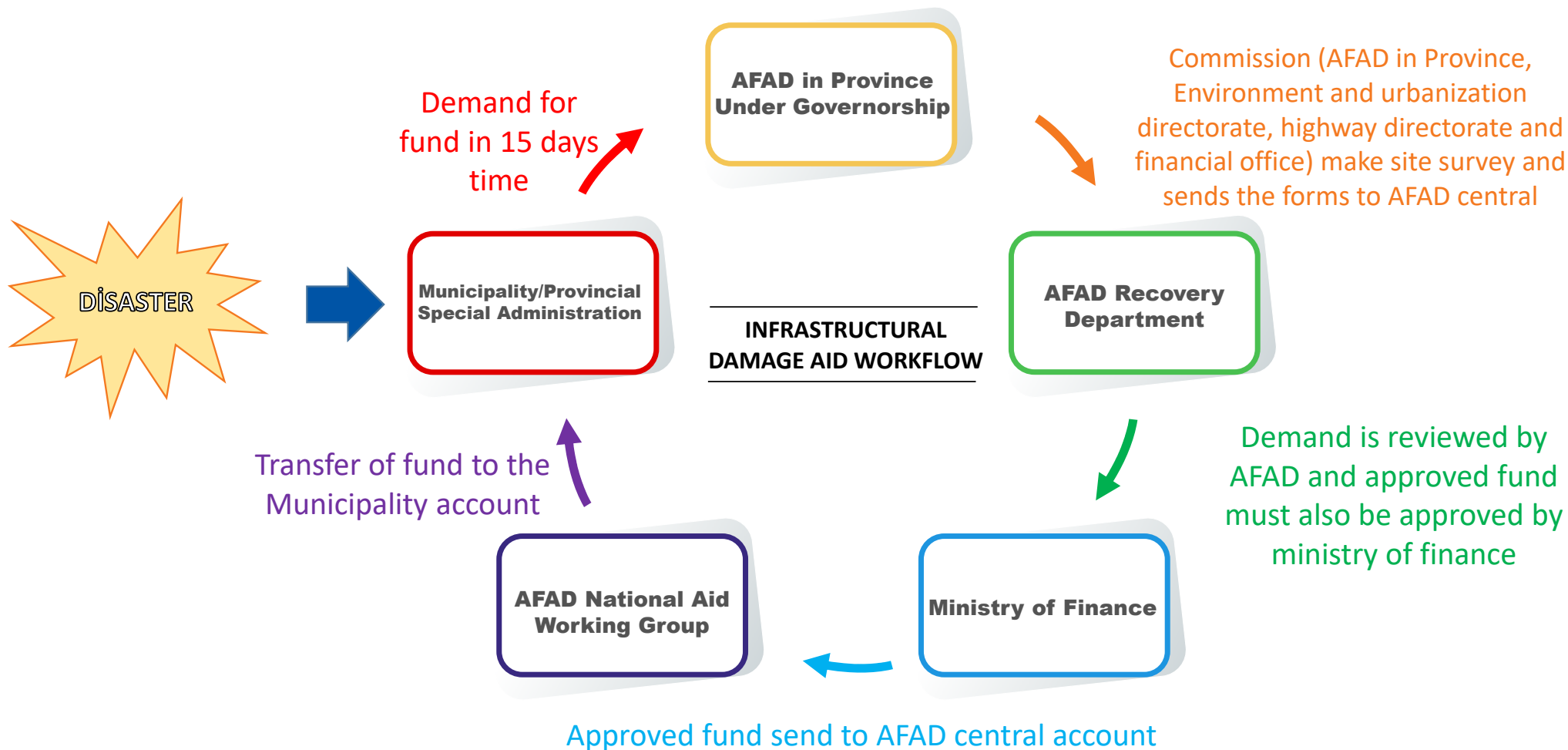
[INSTITUTIONAL ARRANGEMENTS]



[EMERGENCY AID WORKFLOW (5902) AFTER DISASTER]



INFRASTRUCTURAL DAMAGE AID (4123) WORKFLOW AFTER DISASTER





**SOME EXAMPLES
FROM RECENT DISASTERS**

AFAD^{TR}

RECOVERY DEPARTMENT

[DAMAGE PHOTOS FROM DENİZLİ EARTHQUAKE]



[EMERGENCY AID SENT TO RECENT DISASTERS]

Denizli Earthquake Disaster, 2019
Mw: 5.5, App. 2000 Heavy Dam. Dwellings



2.900.000 TL – 487.432 USD

Law No. 5902

TEMPORARY SHELTERING and FOOD AIDS



Temporary Sheltering Aid



Temporary Sheltering Aid



Food Aid

[INFRASTRUCTURE DAMAGE PHOTOS from DÜZCE FLOOD]

Infrastructure Damage



Infrastructure Damage



[INFRASTRUCTURE DAMAGE PHOTOS from DÜZCE FLOOD]



Infrastructure Damage



Infrastructure Damage

[EXAMPLES of EMERGENCY AID SENT TO RECENT DISASTERS]

Düzce Flood Disaster, 2019



6.500.000 TL – 1.092.418 USD

Law No. 5902



41.730.000 TL – 7.013.527 USD

Law No. 4123

**LESSONS LEARNED AND
STRATEGIES FOR INFRASTRUCTURE
RECOVERY IN DUZCE**

AFAD^{TR}

RECOVERY DEPARTMENT

[SOME BASIC CAUSES OF INFRASTRUCTURE DAMAGES IN DUZCE]

- 1 Incorrect Land Use
- 2 External Interventions to Stream Beds
- 3 Insufficient Road Crossing Structures
- 4 Landslides and Slope Collapses due to Flood
- 5 Sedimentation

[SOME STRATEGIES TO MAKE THE INFRASTRUCTURE MORE RESILIENT]



Cleaning and Expansion
of Stream Beds

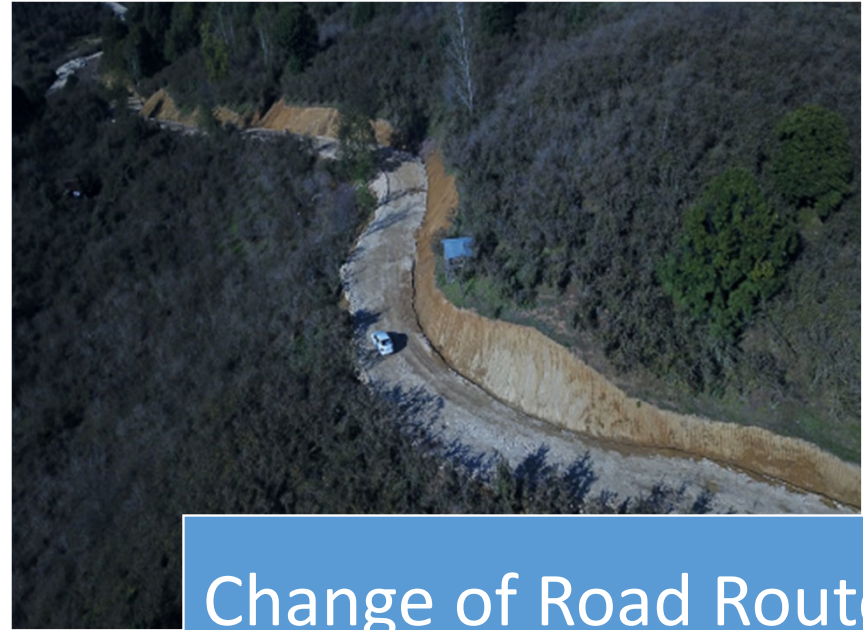


Cleaning and Expansion
of Stream Beds

[SOME STRATEGIES TO MAKE THE INFRASTRUCTURE MORE RESILIENT]



Change of Road Route



Change of Road Route

[SOME STRATEGIES TO MAKE THE INFRASTRUCTURE MORE RESILIENT]



[SOME STRATEGIES TO MAKE THE INFRASTRUCTURE MORE RESILIENT]



Reconstruction with Today's Techniques



Reconstruction with Today's Techniques

[SOME STRATEGIES TO MAKE THE INFRASTRUCTURE MORE RESILIENT]



Reconstruction with Today's techniques



Reconstruction with Today's techniques

AFAD[®]

THANK YOU
FOR YOUR ATTENTION