

Towards a Seamless Inclusive Disaster Recovery

Panel Discussion 2: Ensuring an Inclusive Dividend
in Recovery

Hotel Okura Kobe

January 18, 2019

Shigeo Tatsuki
Doshisha University

Lens of vulnerability in housing recovery (Peacock et al, 2014)

358 Journal of the American Planning Association, Autumn 2014, Vol. 80, No. 4

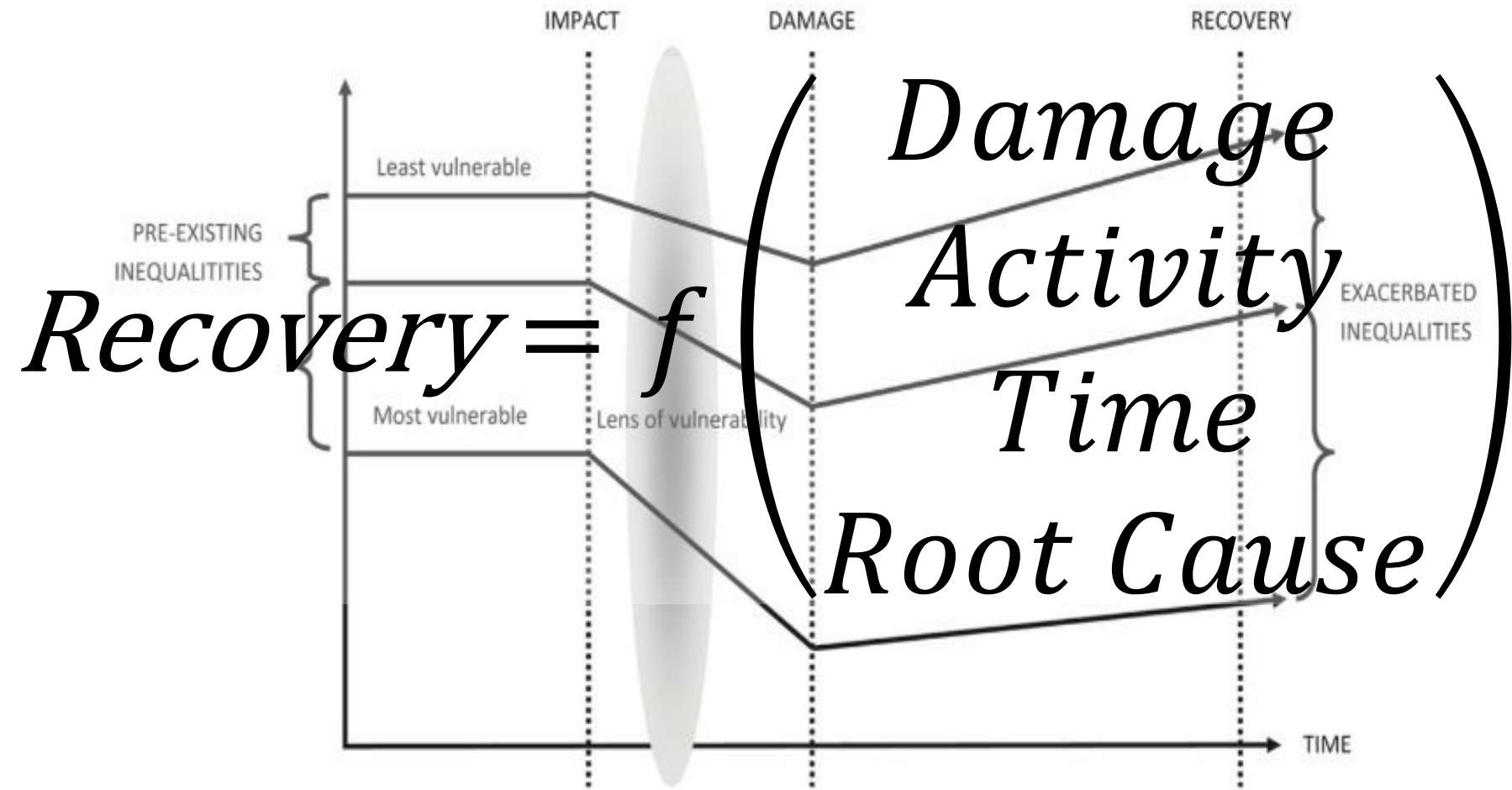
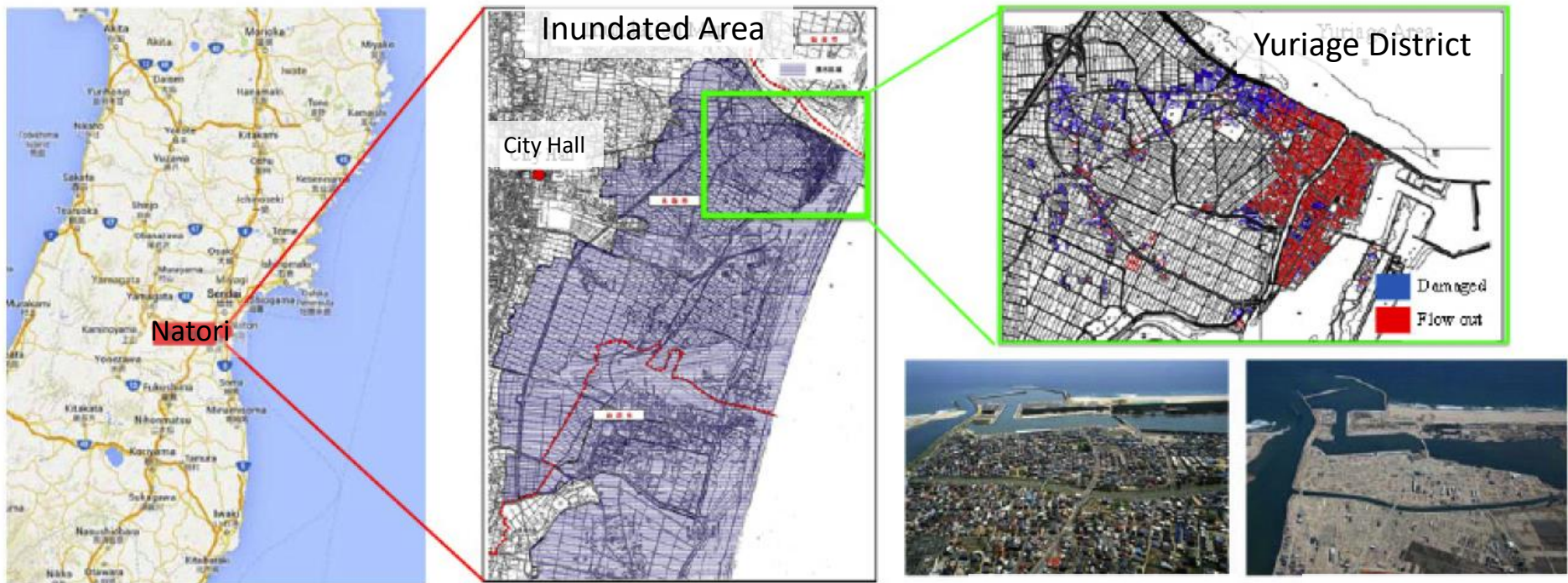


Figure 1. Conceptual model of how housing inequalities may be exacerbated through the recovery process.

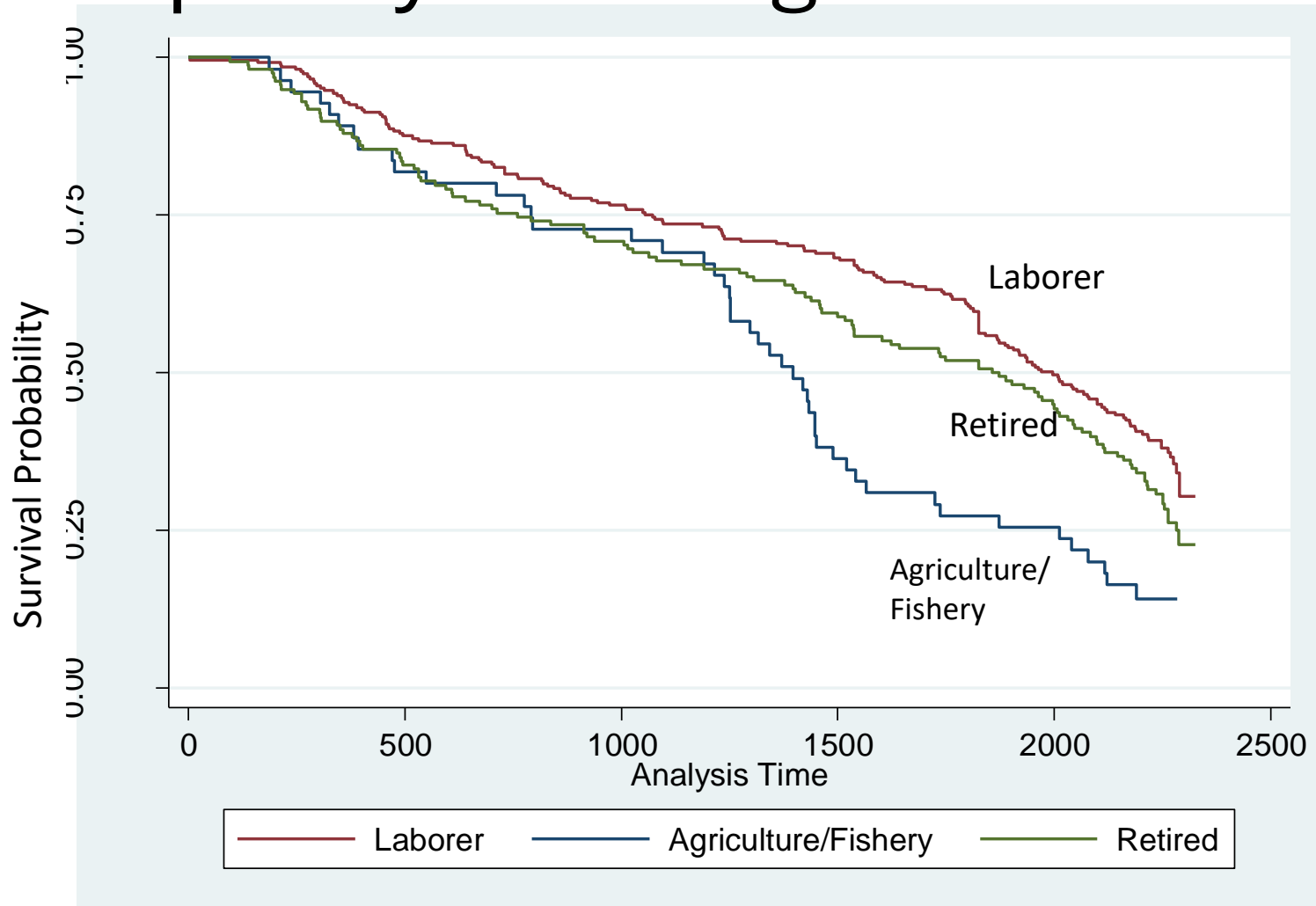
Natori Life Recovery Research Project (2011 to Present)



May, 2007 April, 2011

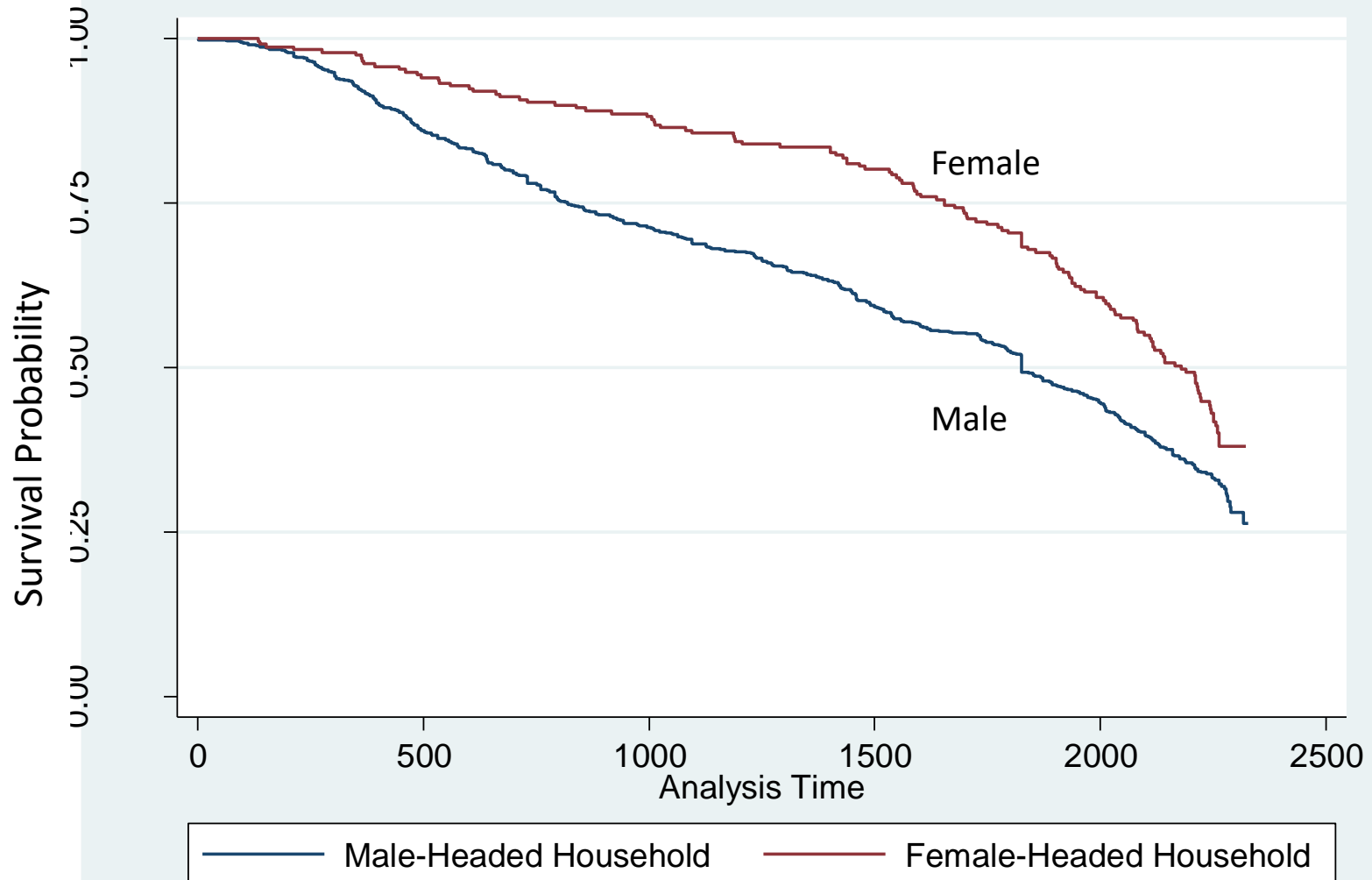
The number of dead was 884 and missing 40 as of Jan. 31, 2014. Over 100,000 buildings were damaged.

Occupation Conditions Associated with Length of Stay (Survival) in Temporary Housing



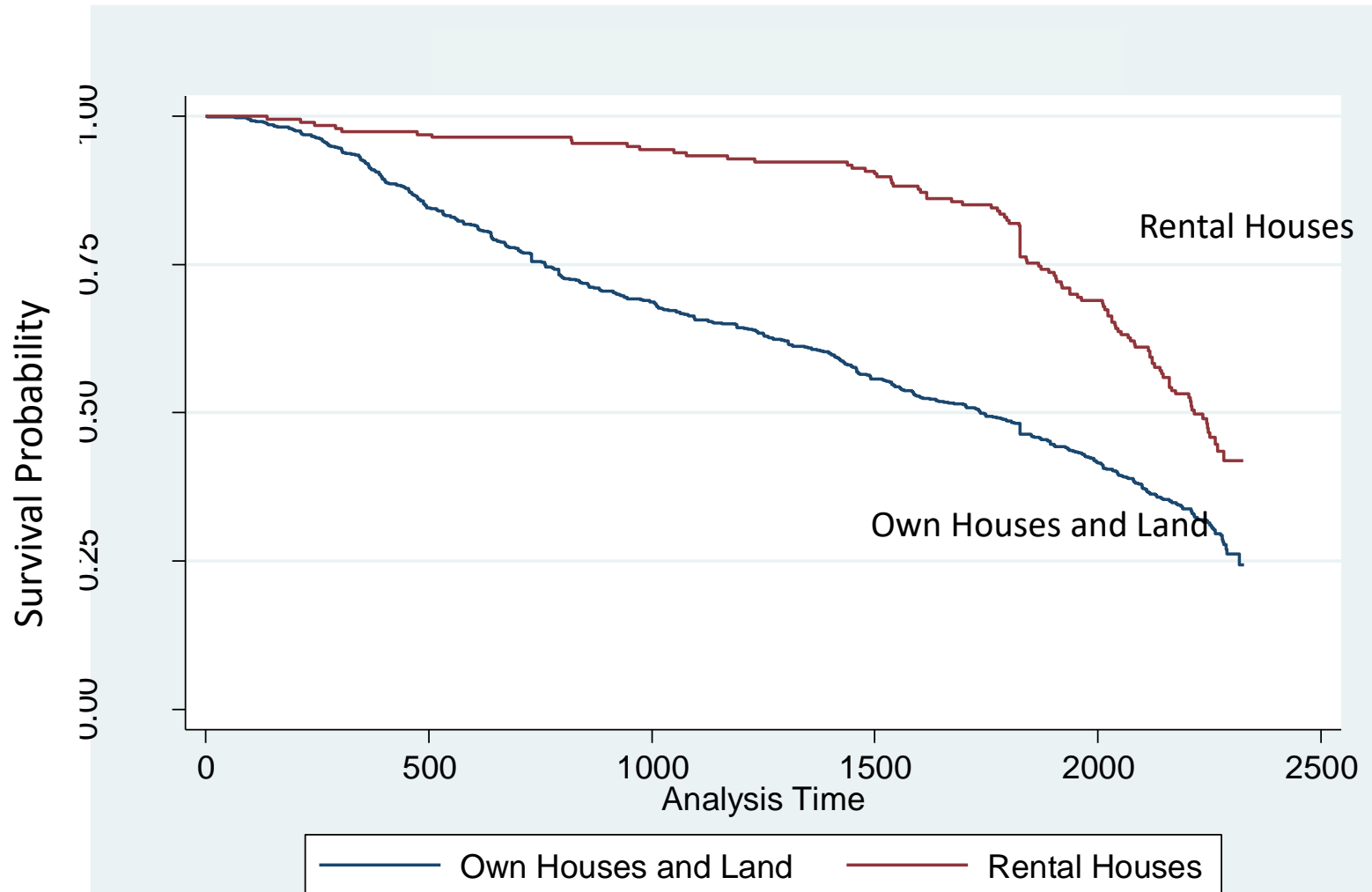
N=936

Gender Conditions Associated with Length of Stay (Survival) in Temporary Housing



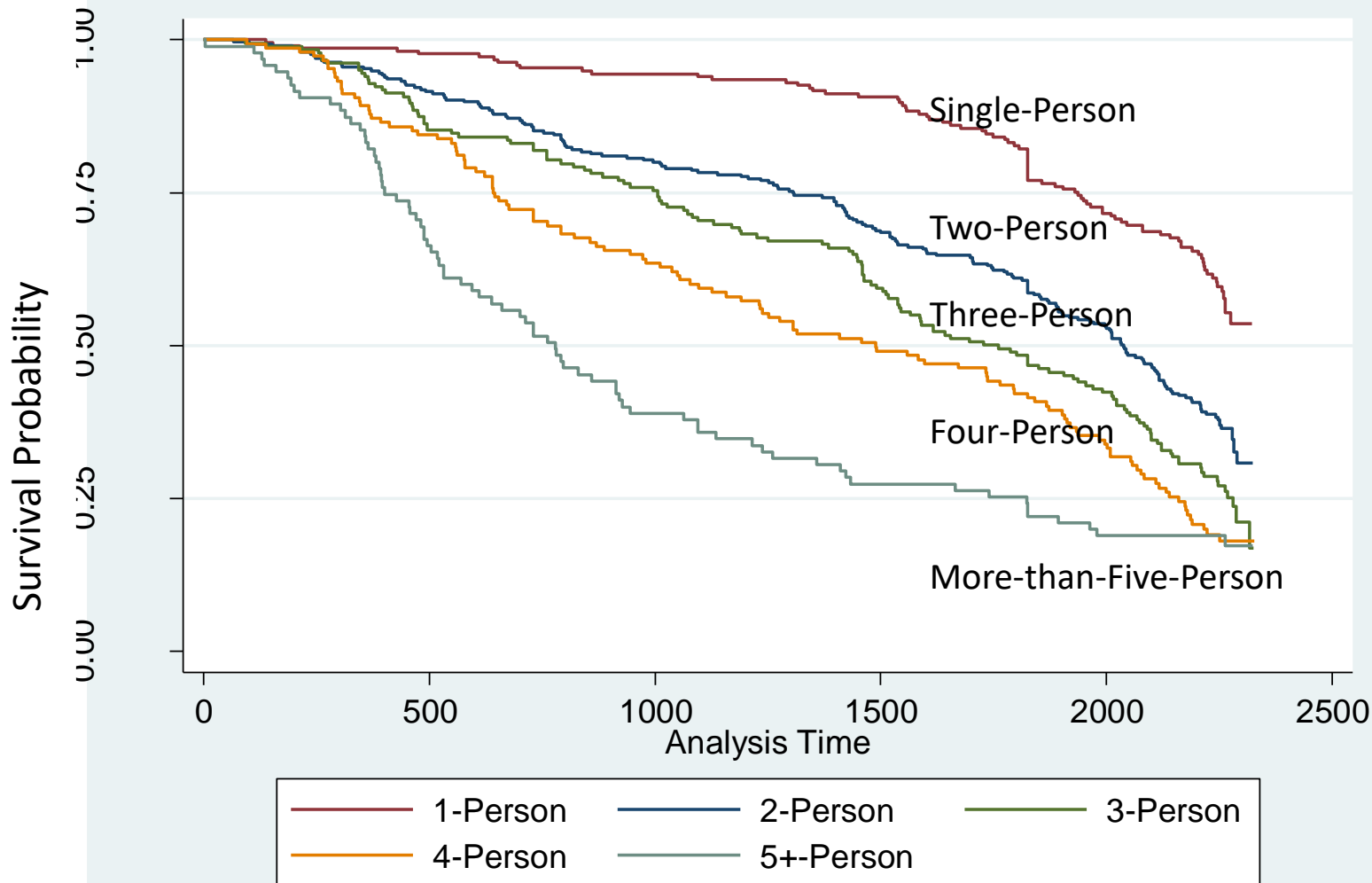
N=936

Previous House Ownership Conditions Associated with Length of Stay (Survival) in Temporary Housing



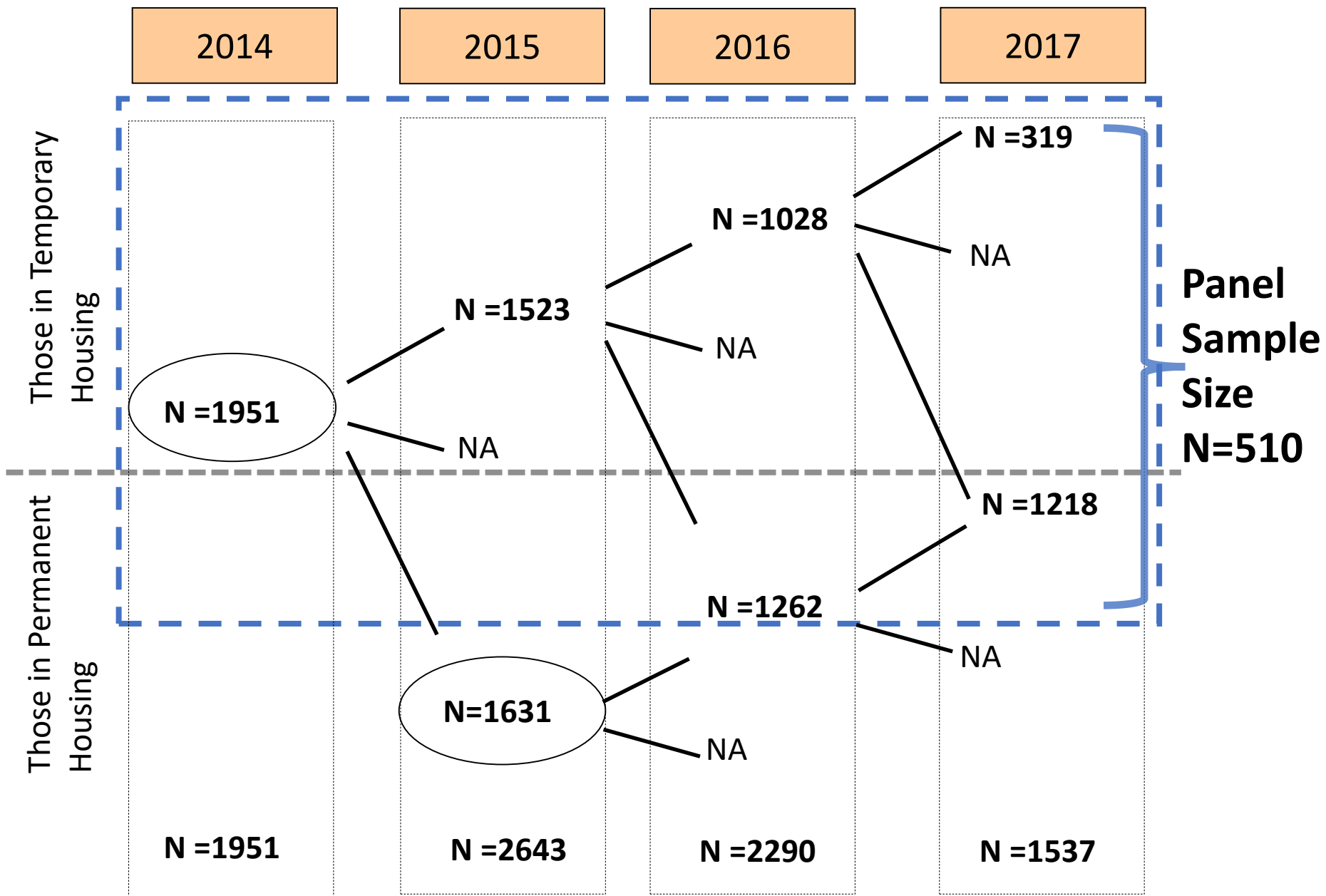
N=936

Household Size Conditions Associated with Length of Stay (Survival) in Temporary Housing

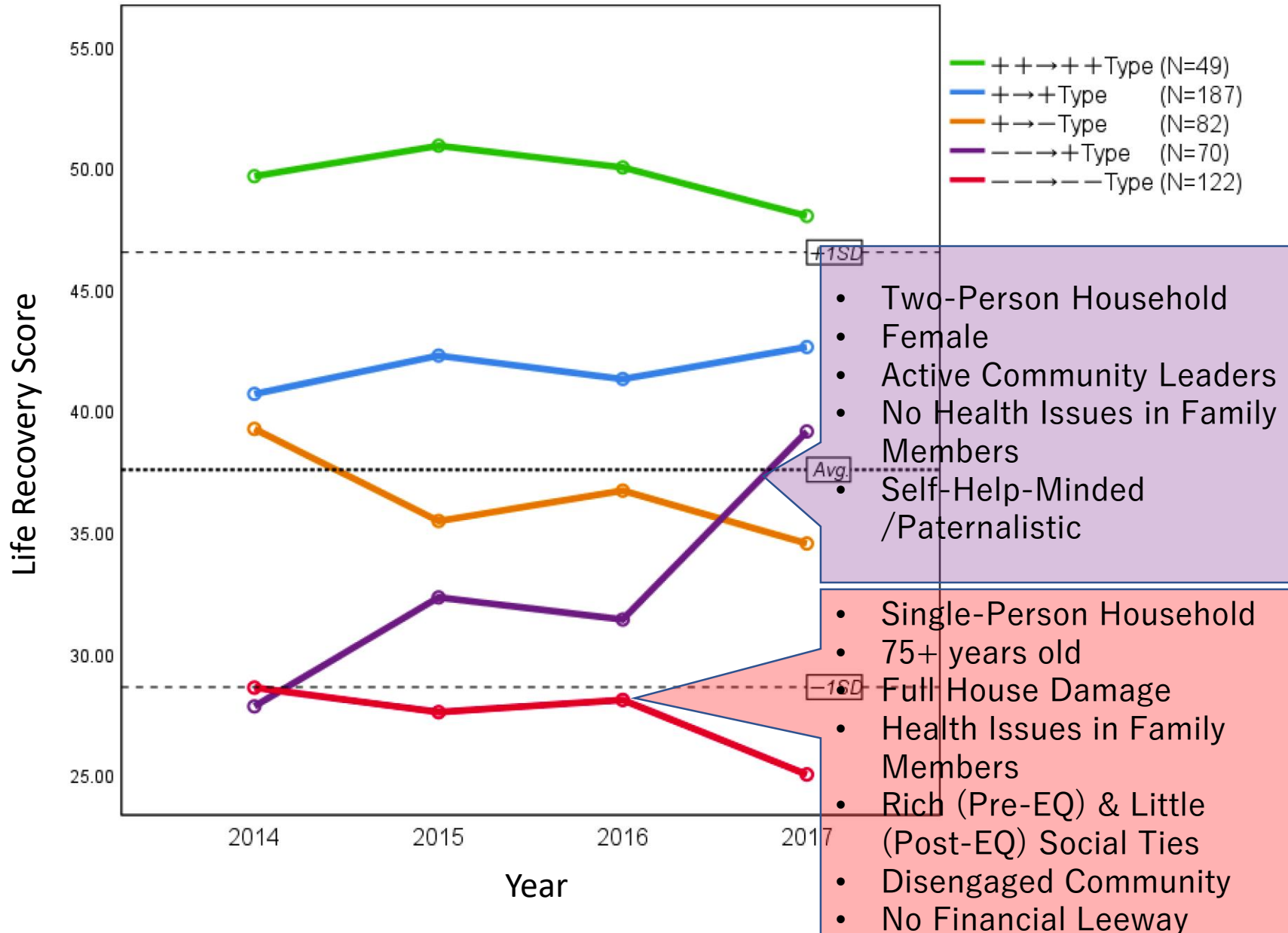


N=936

Panel Study Sample and Survey Strategy



Five Life Recovery Patterns



Cross Over



Disaster
(DRR)

Normalcy
(Social Services)

Crossover



Disaster
(DRR)

Normalcy
(Social Services)

Crossover

