

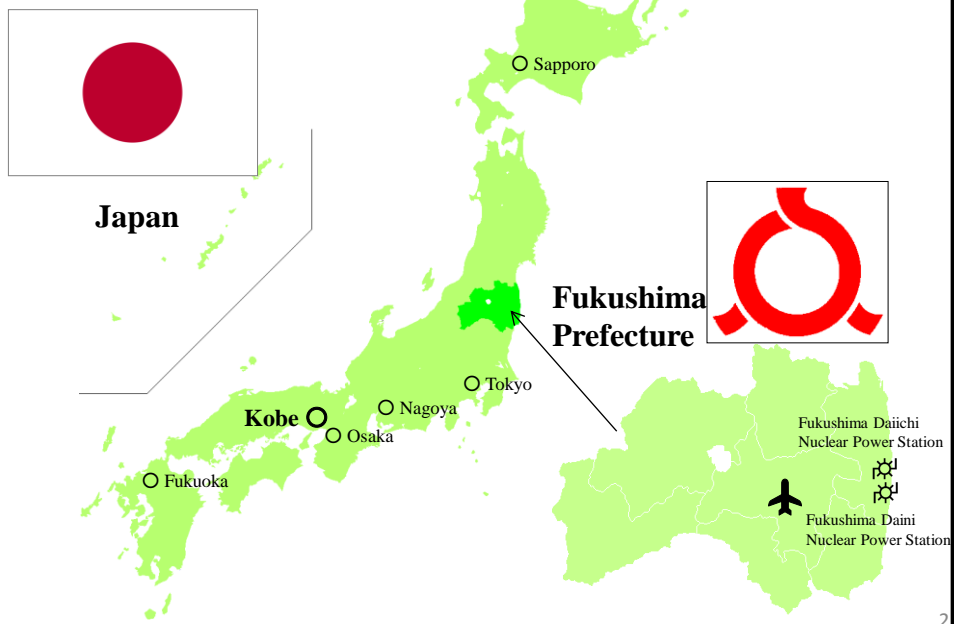


## Revitalization from the nuclear disaster

Planning & Coordination Department,  
Fukushima Prefectural Government

1

### Features of Fukushima Prefecture



2

# Disaster Status of Fukushima Prefecture

## (1) Human damage

- ◆ Death toll; 3,051 persons (disaster-related deaths:1,231 fatalities)
- ◆ Missing persons; 5 persons (As of December 25, 2012)

## (2) Housing damage

- ◆ Totally destroyed; 21,068 houses
- ◆ Half destroyed; 72,339 houses (As of December 25, 2012)

## (3) Damage caused by the earthquake and tsunami

- ◆ Reported damage of public works facilities Approx. 316.2 billion yen
- ◆ Reported damage of agricultural and fishery facilities Approx. 245.3 billion yen
- ◆ Reported damage of educational facilities Approx. 37.9 billion yen
- Total of reported damage of public facilities Approx. 599.4 billion yen

(Total of construction budget for the prefecture and municipalities, as of March 23, 2012)

\* For the prefecture: For areas within 30 km from the Fukushima Daiichi Nuclear Power Station, damage was approximately estimated based on aerial photos

\* For municipalities: Approximate damages for part of Minami Soma City and 8 municipalities in Futaba were not included.

- ◆ Commerce and industry-related damage Approx. 359.7 billion yen

\* Damages of manufacturing industry and commercial industry (wholesale and retail) are estimated.  
Damages of buildings, machinery equipment and stocks in the manufacturing industry and those of building and stocks in the commercial industry (wholesale and retail) are estimated.



Searching around the tsunami-hit area 1 year after the disaster (the restricted area in Uketo District, Namie Town, April, 2011)



Collapsed agricultural dam, Lake Fujinuma located in the inland of the prefecture (Ebana District, Sukagawa City)

3

## (4) Damage caused by the nuclear accident

- ◆ The nuclear accident had a negative impact on all industries and fields across the prefecture, and we can hardly grasp the over-all image of the damage.
- ◆ Heavy spiritual burden, such as infringement of human rights.

The scale of damage was enormous!

### ● Primary industry

- Self-restraint & regulation of shipment
- Self-restraint and regulation of planting
- Self-restraint of fishing
- Shipment ban and price decline etc.

### ● Manufacturing industry

- Refusal of deliveries
- Demand for measuring of radiation level
- Relocation of factories outside the prefecture etc.

### ● Construction industry

- Construction materials contaminated by radiological substances (found out 10 months after the nuclear accident)
- Demand for measuring of radiation level etc.

### ● Tourism industry

- Cancellation of reservations
- Sharp decline of tourists (Decline of school excursions to Aizu Wakamatsu City by 90%) etc.

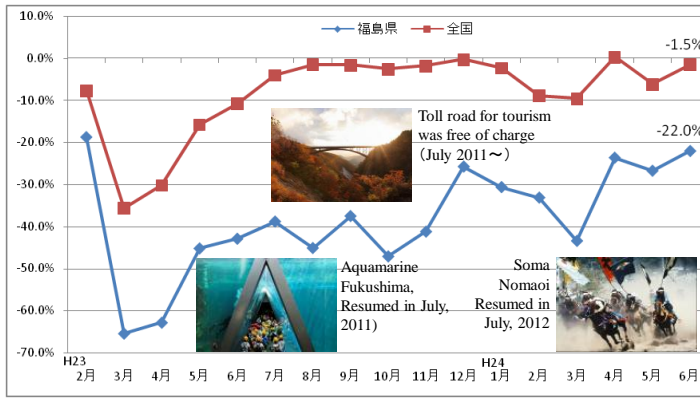
### ● Others

- Sharp decline of the prefectural population
- Separation of family members due to evacuation
- Fear against invisible radiation
- Bullying to children who were evacuating from Fukushima ("Radioactivity is infectious.")
- Refusal to accept evacuees from Fukushima
- Difficulties in processing of contaminated soil, sewage sludge and waste.

4

Transition of the number of guests (guest nights)in facilities for tourists

- A line graph on the actual number of guests on a year- year basis  
(The data from March, 2012, was based on the comparison with the same month 2 years ago)



※【Facilities for tourists】refer to those that accommodated 50% or more guests with a sightseeing purpose .  
【Source】 Japan Tourism Agency, Accommodation Survey

(5) Evacuation order etc. following the nuclear accident

【March 11, 2011】

- Evacuation ordered from a 3 km radius zone around the Daiichi Nuclear Power Station.
- Residents within 10 km of the plant ordered to stay indoors.

【March 12, 2011】

- Evacuation ordered from a 10 km zone around Daiichi NPS. On the same day, evacuation ordered from 20 km of Daiichi NPS.
- Evacuation ordered from 3 km of Daini NPS. On the same day, evacuation ordered from 10 km of the plant.

【April 22, 2011 ~】

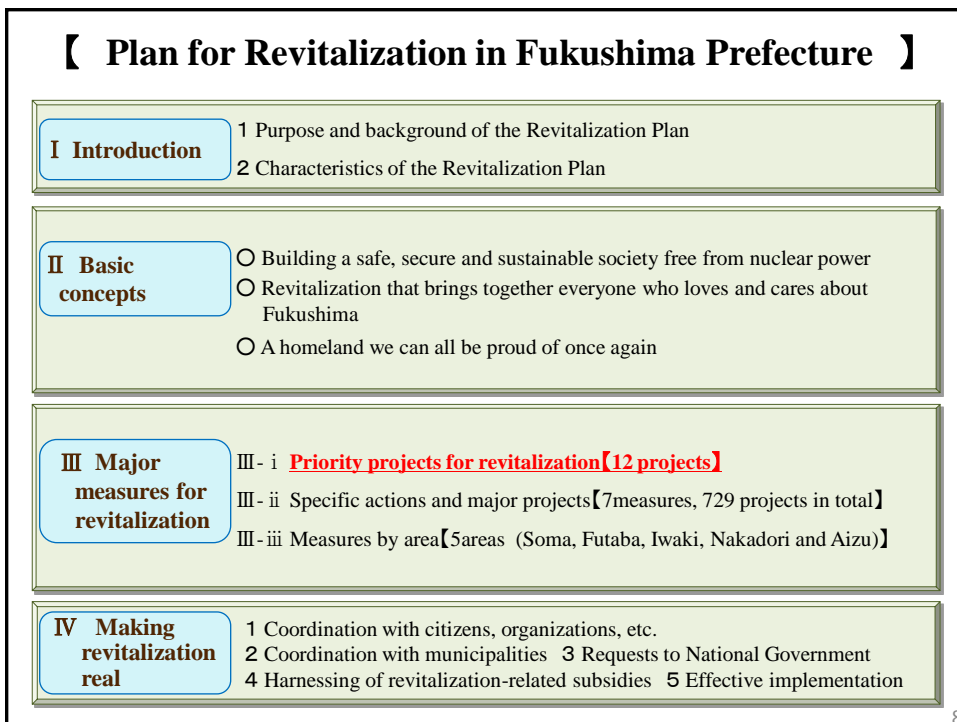
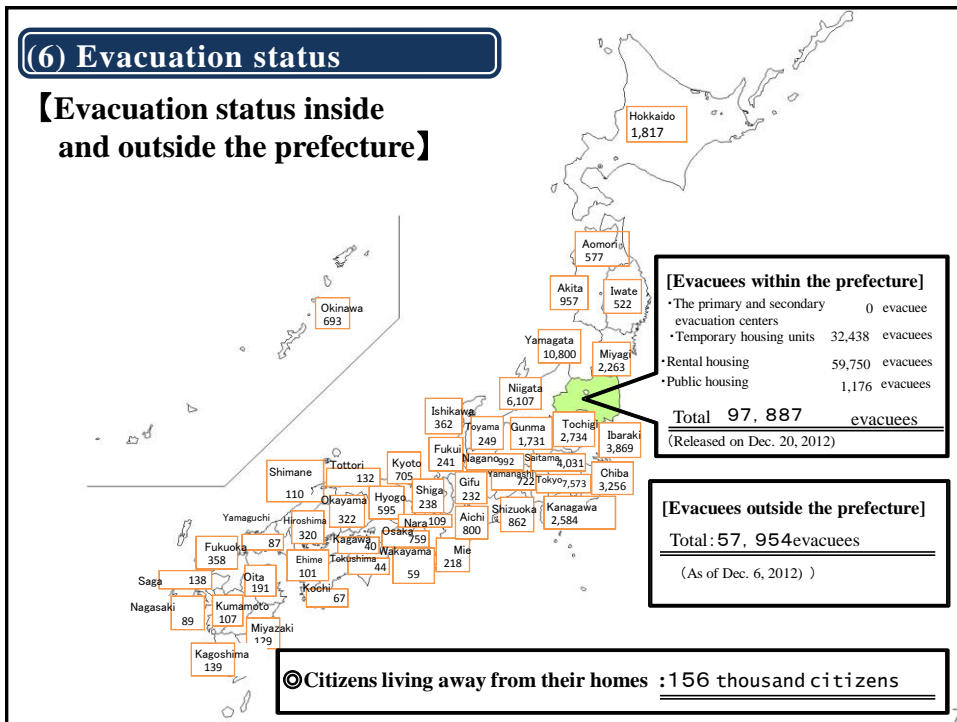


- 【Apr. 1, 2012】 Rezoning of Kawauchi Village and Tamura City
- 【Apr. 16, 2012】 Rezoning of Minami Soma City
- 【Jul.17, 2012】 Rezoning of Iitate Village
- 【Aug.10, 2012】 Rezoning of Naraha Town
- 【Dec. 10, 2012】 Rezoning of Okuma Town

【Current status】

Conceptual map of evacuation areas and restricted areas  
As of November 30, 2012





### III Major measures for revitalization

#### III- i Priority projects for revitalization

Living with peace of mind	<ul style="list-style-type: none"> <li>① Environmental restoration</li> <li>② Assistance for rebuilding livelihoods</li> <li>③ Protecting the physical and mental health of citizens</li> <li>④ Raising and supporting our children and young people, who are our future</li> </ul>
Work in your hometown	<ul style="list-style-type: none"> <li>⑤ Revival of primary industries</li> <li>⑥ Revitalization of SMEs</li> <li>⑦ Promotion of renewable energy</li> <li>⑧ Medical industry cluster</li> </ul>
Rebuild towns, connect people	<ul style="list-style-type: none"> <li>⑨ Building Fukushima connections</li> <li>⑩ Fukushima tourism exchange</li> <li>⑪ Town development for the revitalization of tsunami-hit areas</li> <li>⑫ Strengthening the cooperation and communication infrastructure that links Fukushima</li> </ul>

9

#### Plan for Revitalization In Fukushima Prefecture Priority projects

Living with peace of mind

Work in your hometown

Rebuild town, connect people

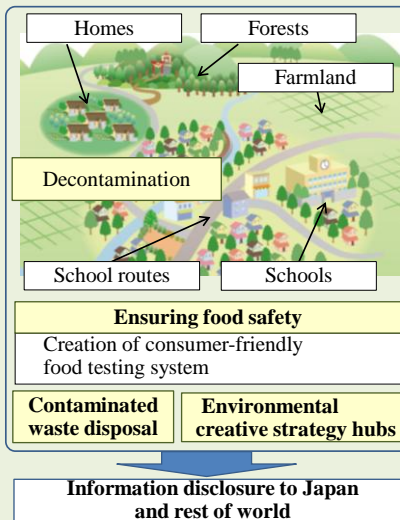
##### Environment restoration project

###### Objective

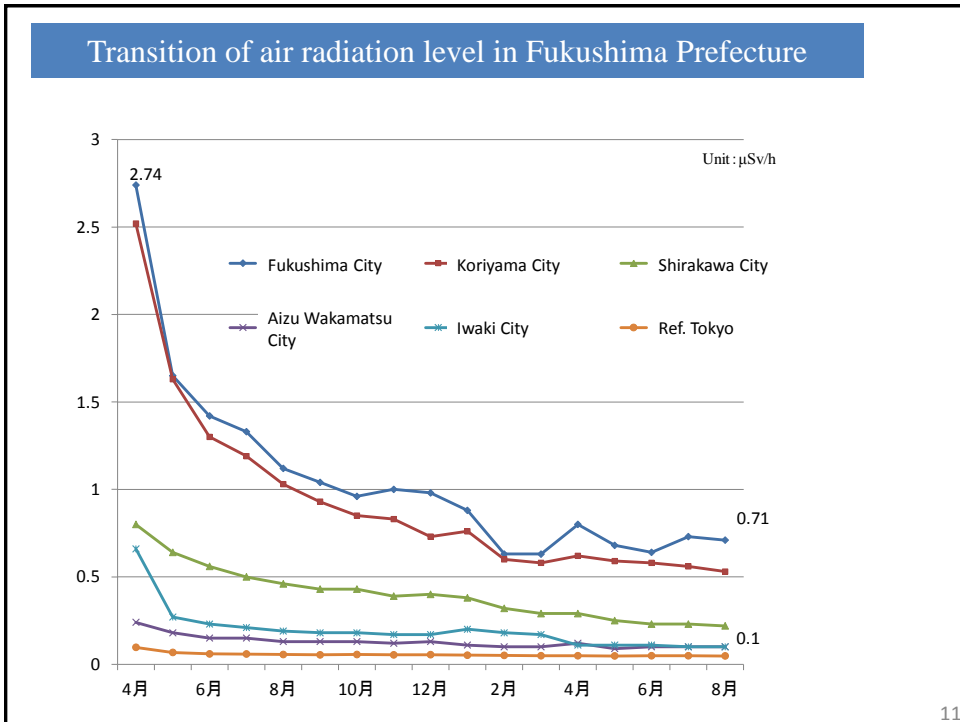
- To secure a livable environment for returnees as soon as possible, by thoroughly decontaminating living areas, farmland, forest as well as facilitating contaminated waste disposal – returning our prefectural lands to a fertile and beautiful state.
- To assure the safety and reassurance of food produced in Fukushima for distribution and consumption by enhancing the food testing measures.

###### Scope

- 1 Decontamination
- 2 Ensuring food safety
- 3 Contaminated waste disposal
- 4 Establishment of hubs



10



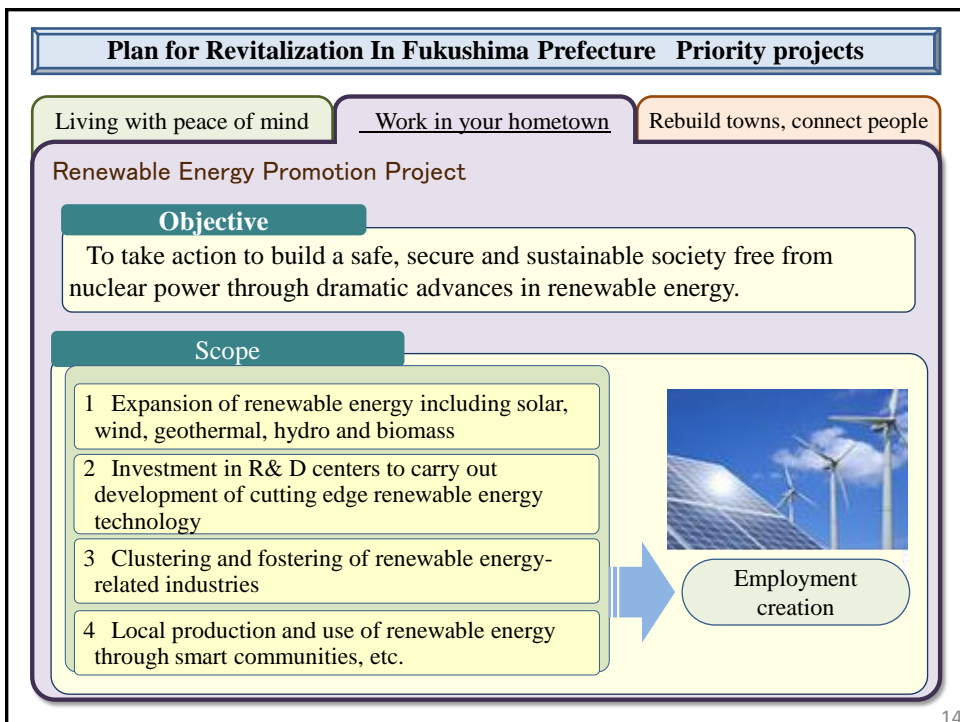
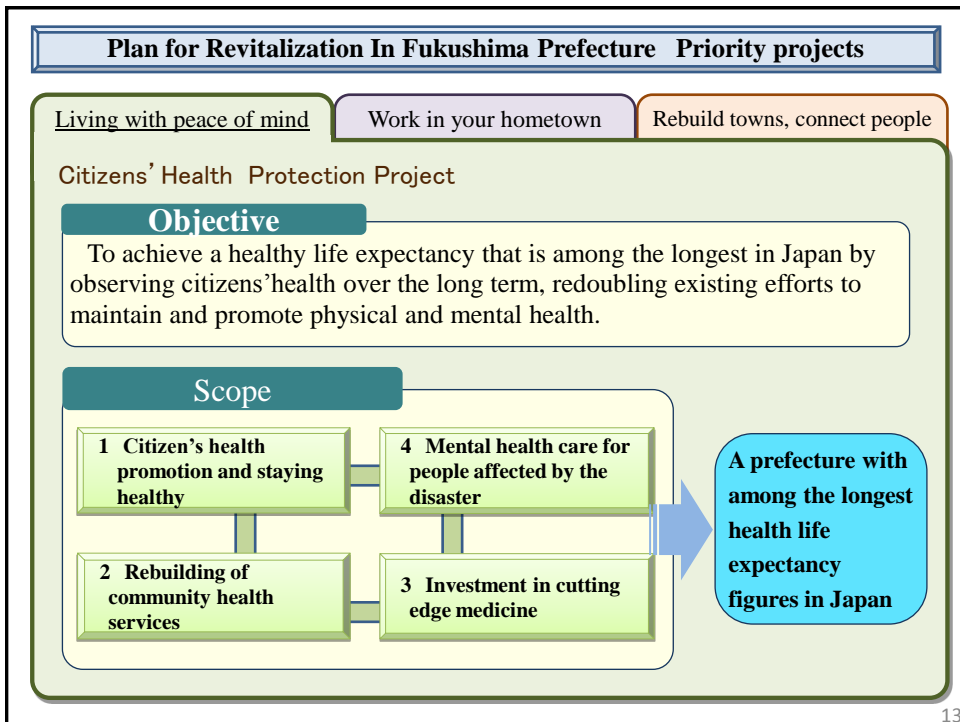
11

### Comparison of overseas standards related to radioactive substances contained in food

Japan	Codex Alimentarius	European Union (EU)	America
Infant food <b>50</b>	Infant food <b>1,000</b>	Infant food <b>400</b>	<b>1,200</b>
Milk <b>50</b>	General food <b>1,000</b>	Dairy product <b>1,000</b>	
General food <b>100</b>		General food <b>1,250</b>	
Drinking water <b>10</b>		Drinking water <b>1,000</b>	

(Unit: Becquerel /kg)

12



**Plan for Revitalization In Fukushima Prefecture Priority projects**



Living with peace of mind      Work in your hometown      Rebuild towns, connect people

**Medical Industry Cluster Project**

**Objective**  
To make Fukushima Japan's leading regional cluster for health-related industries, including cutting edge radiological research, hi-tech diagnosis and treatment, and more

**Scope**

- 1 Medical and welfare device industry cluster
  - Establishing a medical device development and safety assessment hub
  - Setting up an organization to promote the medical and welfare device industry in Fukushima
  - Starting a fund to develop medical and welfare devices and care robots
  - Development and testing of global cutting edge medical devices
  - Support for market entry and business transactions of companies in the prefecture
- 2 Investment in a new drug research center

  
 Employment creation  


15

# The Fukushima Declaration

at the 2012 Pledge for Fukushima Revitalization from 3/11

- We will create once again a beautiful Fukushima.
- We will build a dynamic and vibrant Fukushima.
- We will show the world and pass down to future generations Fukushima's revitalization process.

私たちは必ず、美しいふるさとふくしまを取り戻します。  
 私たちは必ず、活力と笑顔あふれるふくしまを築いていきます。  
 そして私たちは、このふくしま復興の姿を世界へ、未来へと伝えます。  
—ふくしま宣言—

16



Thank you for your attention.

